

# C&K Y Series 4, 5 & 6 Tumbler Switchlocks

## Features/Benefits

- **Anti-static switch**—exceeds 20 KV DC static resistance
- **Momentary models available**
- **Wire leads and harnesses available**

## Typical Applications

- **Point-of-sale terminals**
- **Cash registers**
- **Computers**



Patent No. 4,639,562



## Specifications

**CONTACT RATING:** Q contact material: 4 AMPS @ 125 V AC or 28 V DC; 2 AMPS @ 250 V AC (UL/CSA). See page L-9 for additional ratings.

**ELECTRICAL LIFE:** 10,000 make-and-break cycles at full load.

**CONTACT RESISTANCE:** Below 10 m Ω typ. initial @ 2-4 V DC, 100 mA, for both silver and gold plated contacts.

**INSULATION RESISTANCE:** 10<sup>9</sup> Ω min.

**DIELECTRIC STRENGTH:** 1,000 Vrms min. @ sea level.

**INDEXING:** 45° or 90°, 2-4 positions (4&5 tumbler switchlocks). 45°, 3 positions; or 90°, 2 positions (6 tumbler tubular switchlocks).

Other functions available, consult Customer Service Center.

**STATIC RESISTANCE:** Anti-static models exceed 20 KV DC static resistance @ sea level, lock body to terminals.

**MOUNTING TORQUE:** 10 in./lbs.; 14 in./lbs max.

## Materials

**LOCK:** Zinc alloy with stainless steel facing, std. (4 & 5 tumbler lock and 6 tumbler tubular lock).

**KEYS:** Two nickel plated brass keys, with code number, std. (4 tumbler lock). Two die cast chrome plated zinc alloy keys, std. (6 tumbler lock).

**SWITCH HOUSING:** Glass filled polyester (UL 94V-0).

**CONTACTS AND TERMINALS:** Q contact material: Copper, silver plated. See page L-9 for additional contact materials.

**MOUNTING NUT:** Zinc alloy or steel, nickel or bright zinc plated.

**MOUNTING CLIP:** Steel, nickel or bright zinc plated.

**DRESS NUT:** Brass, nickel plated.

**TERMINAL SEAL:** Epoxy.

**NOTE:** Specifications and materials listed above are for switchlocks with standard options. For information on specific and custom switchlocks, consult Customer Service Center.

## Build-A-Switch

To order, simply select desired option from each category and place in the appropriate box. Available options are shown and described on pages L-4 thru L-9. For additional options not shown in catalog, consult Customer Service Center.



### Switch and Lock Function

- Y10013 (STD.) SP, 45°, keypull pos. 1
- Y1011U (STD.) SP, 90°, keypull pos. 1 & 2
- Y1001U SP, 40°, keypull pos. 1 & 3
- Y2001U DP, 40°, keypull pos. 1 & 3
- Y10082 SP, 40°, keypull pos. 1
- Y20082 DP, 40°, keypull pos. 1
- Y100AA SP, 40°, keypull pos. 1, 2 & 3
- Y200AA DP, 40°, keypull pos. 1, 2 & 3
- Y100AB SP, 40°, keypull pos. 1, 2, 3 & 4
- Y200AB DP, 40°, keypull pos. 1, 2, 3 & 4
- Y10113 SP, 90°, keypull pos. 1
- Y20113 DP, 90°, keypull pos. 1
- Y1011C SP, 90°, keypull pos. 2
- Y2011C DP, 90°, keypull pos. 2
- Y2011U DP, 90°, keypull pos. 1 & 2
- Y14173 SP, 90°, keypull pos. 1
- Y1417U SP, 90°, keypull pos. 1, 2 & 3
- Y10812 SP, 40°, mom., keypull pos. 1
- Y20812 DP, 45°, mom., keypull pos. 1
- Y19073 SP w/common, 90°, keypull pos. 1
- Y1907U SP w/common, 90°, keypull pos. 1, 2 & 3
- Y1900S SP w/common, 90°, keypull pos. 1, 2, 3 & 4

### Keying

- 2 (STD.) Two nickel plated brass keys (4 & 5 tumbler) or two die cast zinc alloy keys with chrome plating (6 tumbler)
- 6 Two nickel plated brass keys with code on lock face

### Lock Type

- A (STD.) 4 Tumbler lock (YX08 models)
- C (STD.) 4 Tumbler lock with detent
- V (STD.) 6 Tumbler tubular lock
- B 5 Tumbler lock
- R 4 Tumbler lock with detent and anti-Static switch
- W 6 Tumbler tubular lock with anti-Static switch

### Lock Finish

- 2 (STD.) Stainless steel facing
- 1 Nickel with removable dress nut
- 4 Polished nickel with removable dress nut
- 8 Gloss black facing
- F Polished nickel facing

### Terminations

- 03 (STD.) Solder lug with hole
- 01 Solder lug with notch
- 02 PC Thru-hole
- 07 Solder lug with hole (Y190XX models only)
- WC Wire lead

### Mounting/Lock Style

- N (STD.) With nut
- D With clip
- L With removable dress nut and latch pawl
- R With removable dress nut

### Contact Material

- Q (STD.) Silver
- B Gold
- G Gold over silver

### Seal

- NONE (STD.) No seal
- E Epoxy seal



Switchlock

# C&K Y Series 4, 5 & 6 Tumbler Switchlocks

## SWITCH AND LOCK FUNCTION



SINGLE & DOUBLE POLE SWITCHES									
NO. TUMBLERS	NO. POLES	MODEL NO.	CONNECTED TERMINALS				KEY PULL POSITIONS	LOCK CONFIGURATION	INDEXING
			POS. 1	POS. 2	POS. 3	POS. 4			
4, 5 & 6	SP	Y10013	8-1	1-2	2-3		Position 1		45°
4, 5 & 6	SP DP	Y1001U Y2001U	8-1 8-1, 4-5	1-2 1-2, 5-6	2-3 2-3, 6-7		Positions 1 & 3		
4 & 5	SP DP	Y10082 Y20082	8-1 8-1, 4-5	1-2 1-2, 5-6	7-8 7-8, 3-4		Position 1		
4	SP DP	Y100AA Y200AA	8-1 8-1, 4-5	1-2 1-2, 5-6	7-8 7-8, 3-4		Positions 1, 2 & 3		
4	SP DP	Y100AB Y200AB	8-1 8-1, 4-5	1-2 1-2, 5-6	2-3 2-3, 6-7	3-4 3-4, 7-8	Positions 1, 2, 3 & 4		90°
4, 5 & 6	SP DP	Y10113 Y20113	8-1 8-1, 4-5	1-3 1-3, 5-7			Position 1		
4 & 5	SP DP	Y1011C Y2011C	8-1 8-1, 4-5	1-3 1-3, 5-7			Position 2		
4, 5 & 6	SP DP	Y1011U Y2011U	8-1 8-1, 4-5	1-3 1-3, 5-7			Positions 1 & 2		
4	SP	Y14173	7-1	1-3	6-7		Position 1		45° Mom.
4	SP	Y1417U	7-1	1-3	6-7		Positions 1, 2 & 3		

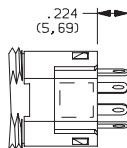
  

SINGLE & DOUBLE POLE MOMENTARY SWITCHES									
NO. TUMBLERS	NO. POLES	MODEL NO.	CONNECTED TERMINALS				KEY PULL POSITIONS	LOCK CONFIGURATION	INDEXING
			POS. 1	POS. 2	POS. 3	POS. 4			
4	SP DP	Y10812 Y20812	8-1 8-1, 4-5	1-2 1-2, 5-6			Position 1		45° Mom.

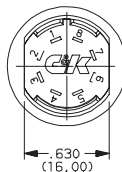
Switchlock

### LEGEND

- ▲ = Momentary Positions (45°)
- = Detent Positions (45° or 90°)
- ⊙ = Key pull possible in these positions.
- ⊙ = Stop Positions



### TERMINAL NUMBERS



Terminal numbers molded on bottom of housing.

All models with all options when ordered with 'G' or 'Q' contact material.



Third Angle Projection

Dimensions are shown: IN (mm)  
Dimensions subject to change

# C&K Y Series 4, 5 & 6 Tumbler Switchlocks

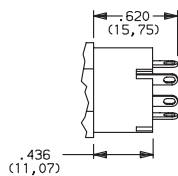
## SWITCH AND LOCK FUNCTION



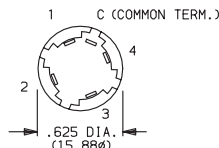
SINGLE POLE SWITCHES WITH COMMON									
NO. TUMBLERS	NO. POLES	MODEL NO.	CONNECTED TERMINALS				KEY PULL POSITIONS	LOCK CONFIGURATION	INDEXING
			POS. 1	POS. 2	POS. 3	POS. 4			
4	SP	Y19073	C-1	C-2	C-4		Position 1		90°
		Y1907U					Positions 1, 2 & 3		
		Y1900S	C-1	C-2	C-3	C-4	Positions 1, 2, 3 & 4		

### LEGEND

- = Detent Positions (45° or 90°)
- ⊙ = Key pull possible in these positions.
- ⊙ = Stop Positions



### TERMINAL NUMBERS

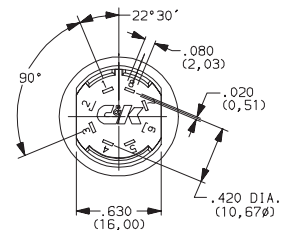
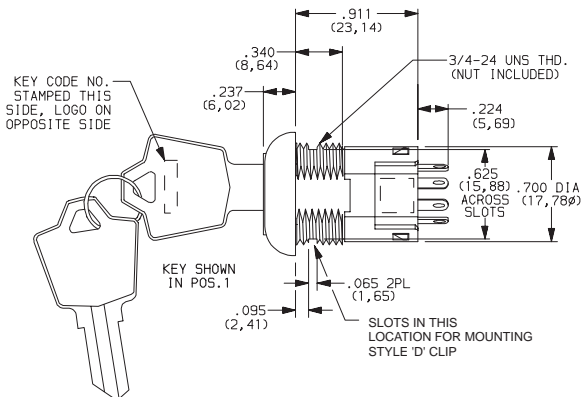
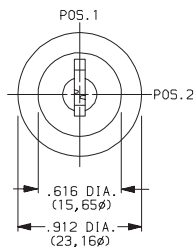


Terminal numbers marked on insulator.

All models with all options when ordered with 'G' or 'Q' contact material.

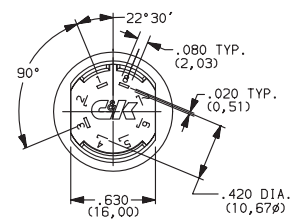
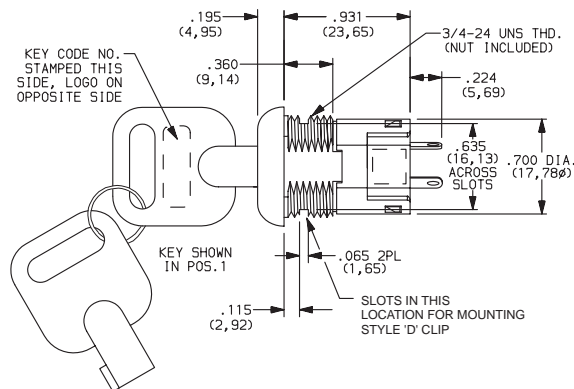
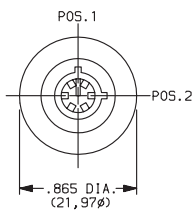
**NOTE:** Epoxy seal not available. Removable dress nut not available with any Y190XX models.

### 4 & 5 Tumbler

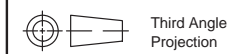


Part number shown: Y100132C203NO

### 6 Tumbler



Part number shown: Y1011U2V203NO



Third Angle Projection  
Dimensions are shown: IN (mm)  
Dimensions subject to change



Switchlock

# C&K Y Series 4, 5 & 6 Tumbler Switchlocks

## SWITCH AND LOCK FUNCTION

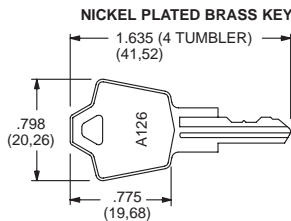
AVAILABLE OPTION COMBINATIONS															
MODELS	LOCK TYPES						TERMINATIONS					MOUNTING/LOCK STYLES			
	A	B	C	R	V	W	01	02	03	07	WC	D	L	N	R
YX0013		•	•		•	•	•	•	•		•	•		•	•
YX001U		•	•	•	•	•	•	•	•		•	•	•	•	•
YX0082		•	•	•			•	•	•		•	•		•	•
YX00AX			•	•			•	•	•		•	•		•	•
YX0113		•	•	•	•	•	•	•	•		•	•		•	•
YX011C		•	•	•			•	•	•		•	•		•	•
YX01IU		•	•	•	•	•	•	•	•		•	•	•	•	•
Y141XX			•	•			•	•	•		•	•		•	•
YX0812	•						•	•	•		•	•		•	•
YX08AH	•						•	•	•		•	•		•	•
Y190XX			•	•				•		•	•			•	•
YX08AD	•						•	•	•		•	•		•	•
YX08AJ	•						•	•	•		•	•		•	•

## KEYING

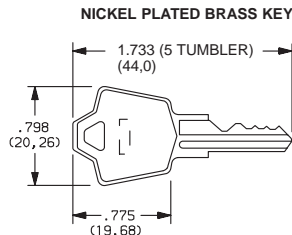
KEYING

OPTION CODE	KEYING OPTIONS	CODE NO. ON KEY	CODE NO. ON LOCK
2	(STD.) 2 NICKEL PLATED BRASS KEYS (4 & 5 TUMBLER) or 2 DIE CAST CHROME PLATED ZINC ALLOY KEYS (6 TUMBLER)	YES	NO
6	2 NICKEL PLATED BRASS KEYS, 4 & 5 TUMBLER ONLY	YES	YES

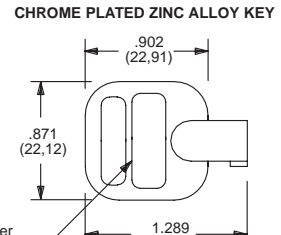
NOTE: All orders keyed alike, standard. For more than one key code, master keying, replacement keys, or other special features, consult Customer Service Center.



Key part number: 115140126



Key part number: 115441001



Code number on opposite side of key.

Key part number: 363C1AAAA

NOTE: Keys are available separately, see page L-10.

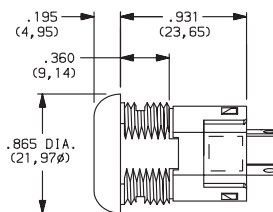
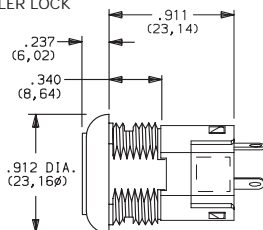
## LOCK TYPE

**C** (STD.) 4 TUMBLER LOCK WITH DETENT

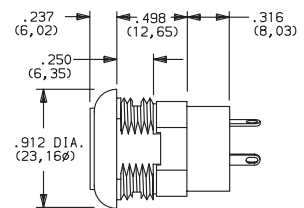
**V** (STD.) 6 TUMBLER TUBULAR LOCK

**A** 4 TUMBLER LOCK (MOMENTARY MODELS ONLY)

**B** 5 TUMBLER LOCK



Available with Lock Finish '2' only.

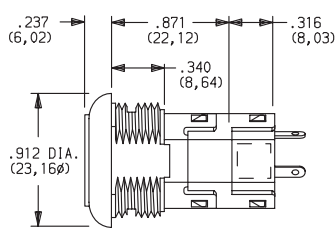


# C&K Y Series 4, 5 & 6 Tumbler Switchlocks

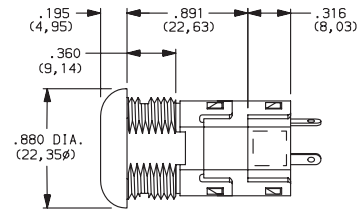
## LOCK TYPE

### SHORT ANTI-STATIC LOCK TYPES

**R** 4 TUMBLER LOCK WITH DETENT AND SHORT ANTI-STATIC SWITCH.



**W** 6 TUMBLER TUBULAR LOCK WITH ANTI-STATIC SWITCH



Available with Lock Finish '2' only.

**NOTE:** For available option combinations, see page L-9.  
U.S. Pat. No. 4,639,562 Exceeds 20 KV DC static resistance @ sea level, lock body to terminals.

## LOCK FINISH

**2** (STD.) STAINLESS STEEL

**1** NICKEL

**4** POLISHED NICKEL

**8** GLOSS BLACK

**F** POLISHED NICKEL



Available with Lock Types 'V' & 'W' only.

**NOTE:** For available option combinations, see page L-9.

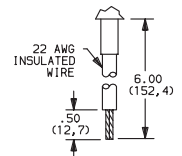
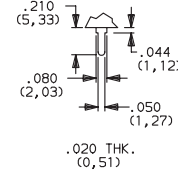
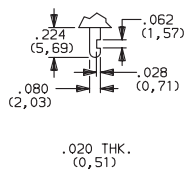
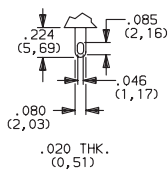
## TERMINATIONS

**03** (STD.) SOLDER LUG WITH HOLE

**01** SOLDER LUG WITH NOTCH

**02** PC THRU-HOLE

**WC** WIRE LEAD



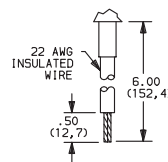
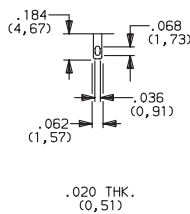
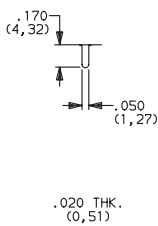
Black wire standard. other colors and lengths available, consult Customer Service Center. UL style 1015.

All Models Except Y190

**02** PC THRU-HOLE

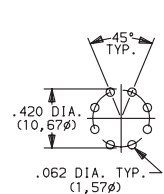
**07** SOLDER LUG WITH HOLE

**WC** WIRE LEAD



Black wire standard. other colors and lengths available, consult Customer Service Center. UL style 1015.

**PC MOUNTING**



Y190 Model Only



Cannon

Dimensions are shown: IN (mm)  
Dimensions subject to change

www.ittcannon.com



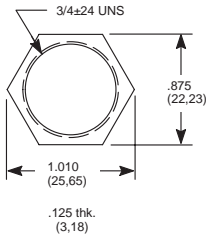
L

Switchlock

# C&K Y Series 4, 5 & 6 Tumbler Switchlocks

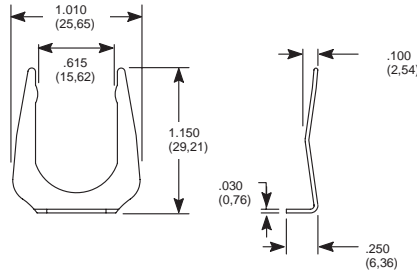
## MOUNTING/LOCK STYLE

### N (STD.) WITH NUT



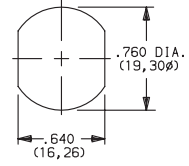
Nut part number: 175050700

### D WITH CLIP



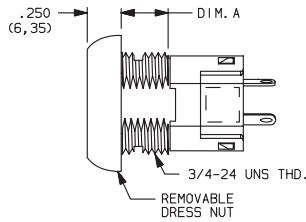
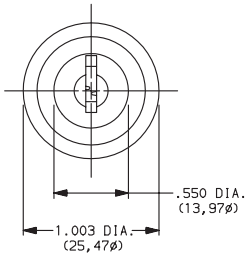
Clip part number: 175050300

### PANEL MOUNTING

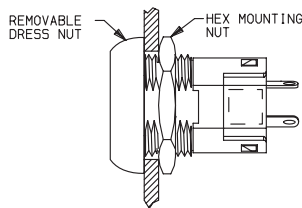
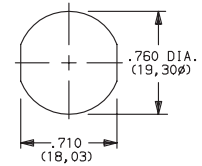


OPTION CODE	MOUNTING STYLE	PANEL THICKNESS
N	(STD.) WITH NUT	.085-.105 (2,16-2,67)
D	WITH CLIP	.085-.105 (2,16-2,67)

### R REMOVABLE DRESS NUT



### PANEL MOUNTING



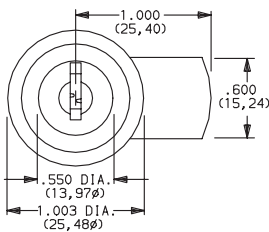
LOCK DIMENSIONS	
LOCK TYPES	DIMENSIONS
	'A'
A, N	.270 (6,68)
C, R	.360 (9,14)

### TYPICAL INSTALLATION

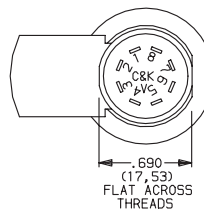
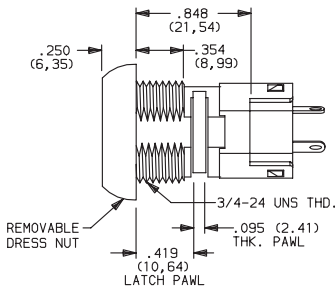
Install hex nut with enough clearance to allow for dress nut and panel. Place switch through cutout in rear of panel. Install and tighten dress nut by hand, then tighten hex nut. Always tighten assembly with back of panel hex nut to avoid damaging front of panel.

NOTE: Removable dress nut not available with Y1900A model.

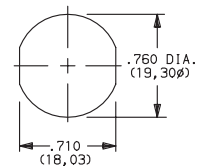
### L REMOVABLE DRESS NUT WITH LATCH PAWL



Latch pawl shown in pos. 1.



### PANEL MOUNTING



Dimensions are shown: IN (mm)  
Dimensions subject to change



# C&K Y Series 4, 5 & 6 Tumbler Switchlocks

## MOUNTING/LOCK STYLE

### Mounting Information (All Models)

PANEL THICKNESS			
MOUNTING STYLES	A, B LOCK TYPES	C, R LOCK TYPES	V, W LOCK TYPES
D	.065-.085 (1, 65-2, 16)		.085-.105 (2, 16-2, 67)
N	.105 (2, 67) max.	.195 (4, 95) max.	.215 (5, 46) max.
L	.215 (5, 46) max.		–
R	.125 (3, 18) max.	.215 (5, 46) max.	–


AVAILABLE OPTION COMBINATIONS											
MOUNTING STYLES	LOCK FINISHES					LOCK TYPES					
	1	2	4	8	F	A	B	C	R	V	W
D		●		●	●	●		●	●	●	●
N		●		●	●	●		●	●	●	●
R	●		●	●		●		●	●		
L	●		●	●				●	●		

## CONTACT MATERIAL

OPTION CODE	CONTACT AND TERMINAL MATERIAL	RATINGS	
		POWER	
<b>Q</b> (STD.)	SILVER <sup>2</sup>	POWER	4 AMPS @ 125 V AC OR 28 V DC; 2 AMPS @ 250 V AC (UL/CSA).
<b>B</b>	GOLD <sup>1</sup>	LOW LEVEL/DRY CIRCUIT	0.4 VA MAX. @ 20 V AC OR DC MAX.
<b>G</b>	GOLD OVER SILVER <sup>3</sup>	LOW LEVEL/DRY CIRCUIT OR POWER	0.4 VA MAX. @ 20 V AC OR DC MAX. OR 4 AMPS @ 125 V AC OR 28 V DC; 2 AMPS @ 250 V AC (UL/CSA).

CONTACT MATERIAL/APPLICATION RECOMMENDATIONS—SEE SECTION N.

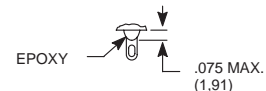
- <sup>1</sup> CONTACTS & TERMINALS: Copper, with gold plate over nickel plate.  
<sup>2</sup> CONTACTS & TERMINALS: Copper, silver plated (std. with all termination options).  
<sup>3</sup> CONTACTS & TERMINALS: Copper, with gold plate over silver plate.

All models  with all options when ordered with 'G' or 'Q' contact material.

## SEAL

**NONE** (STD.) NO SEAL

**E** EPOXY SEAL



# C&K Y Series 4, 5 & 6 Tumbler Switchlocks

## AVAILABLE HARDWARE



Key Code: A126  
4 TUMBLER  
**PART NO. (ONE KEY)**  
**115140126**  
Material: Brass  
Finish: Nickel plate

Key Code: D001  
5 TUMBLER  
**PART NO. (ONE KEY)**  
**115441001**  
Material: Brass  
Finish: Nickel plate



Key Code: AAAA  
**PART NO. (ONE KEY)**  
**363C1AAAA**

Material: Zinc alloy  
Finish: Chrome plate

**NOTE:** Additional nuts available separately,  
see section N.



Switchlock